



Expansion of the ITU Campus

January 17, 2020

IT UNIVERSITY OF COPENHAGEN

THE BACKGROUND FOR THE EXPANSION

Positive reason for the need for more space:

ITU is growing and further growth is expected



THE VISION AND THE PRINCIPLES FOR AN INTEGRATED CAMPUS

Vision

Our aim with our new facilities is to create a space for continuing improvement and growth:

- *High-quality education and research*
- *An interconnected campus*
- *A human perspective*

Principles

1. *There should be a critical mass of staff in both locations*
2. *Both TAP and VIP must be present in the new location*
3. *All academic departments must be well represented in the new location*

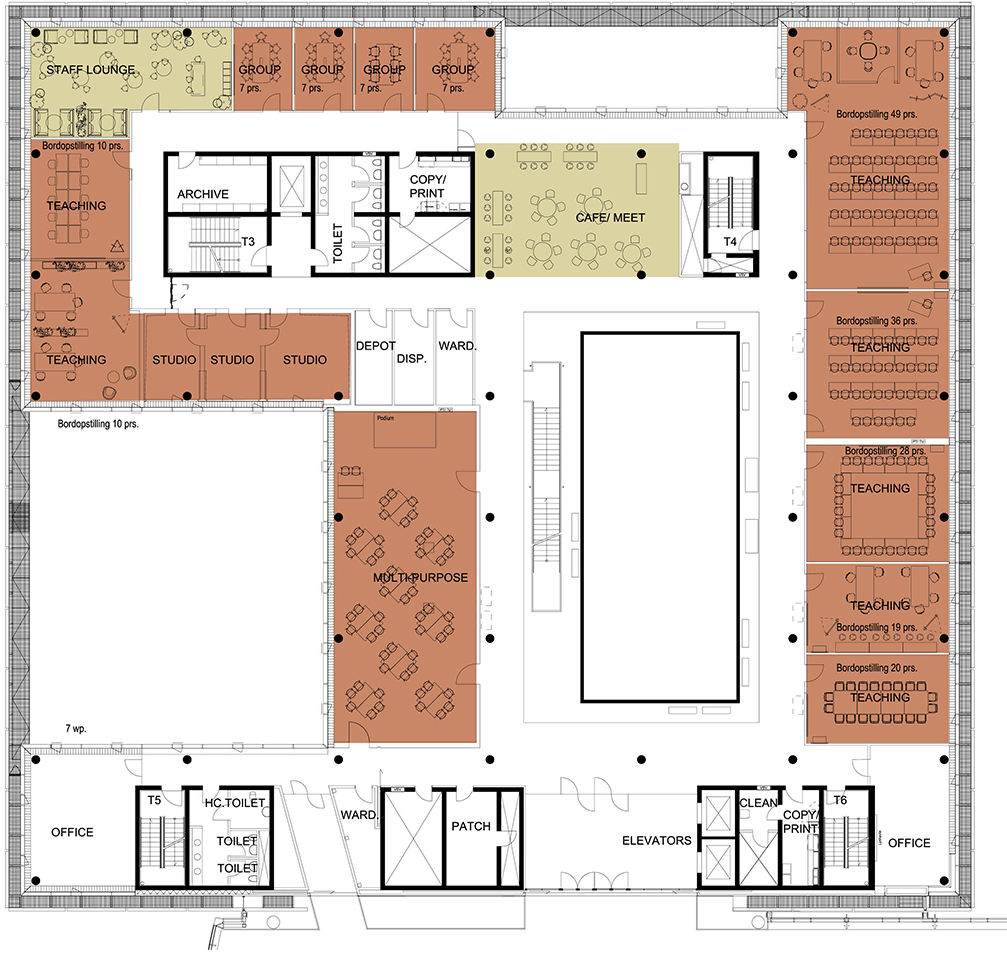
DECISIONS ON THE BASIS OF THE NEED ANALYSIS

- Enough room for everyone to have their own desk
- New staff lounge where employees can have lunch
- 'Friday breakfast' and celebrations in staff lounge or meeting rooms

DECISIONS ON THE BASIS OF THE NEED ANALYSIS

- 185 seats in total + drop in
- Second floor for teaching and a staff lounge
- Third floor for TAP
- Fourth floor for VIP
- Fifth floor will be rented out

SECOND FLOOR FOR TEACHING AND A STAFF LOUNGE



Kitchen area

Staff lounge

1 big multipurpose room

5 medium size teaching rooms

2 small teaching rooms

4 group rooms

3 high quality sound studios

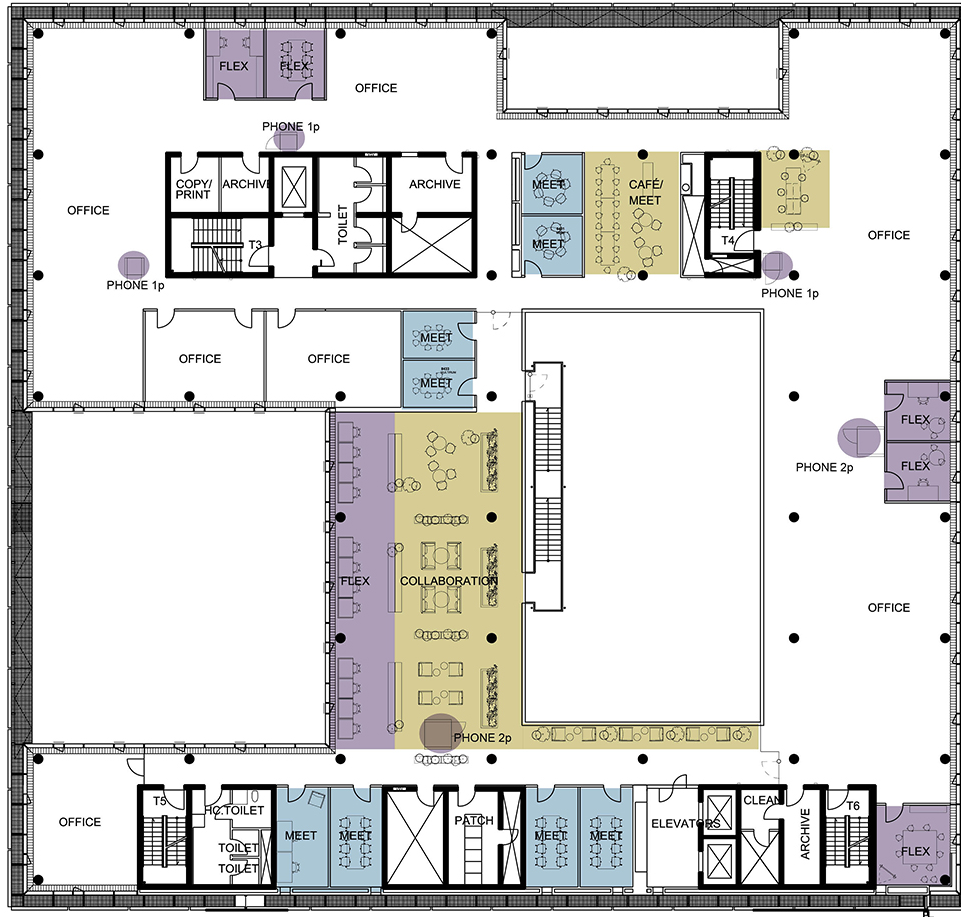
THIRD FLOOR FOR TECHNICAL AND ADMINISTRATIVE PERSONNEL



Kitchen area

12 meeting rooms/flexible rooms

FOURTH FLOOR FOR SCIENTIFIC PERSONNEL



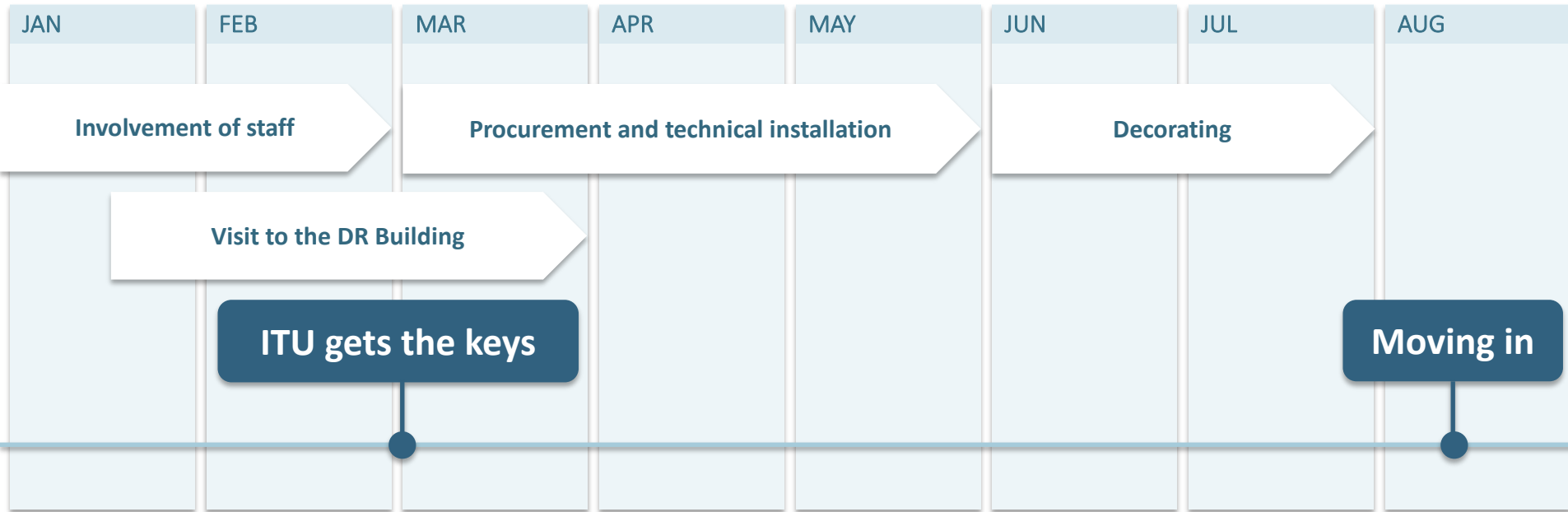
Kitchen area

13 meeting rooms/flex rooms

Drop-in zone for guests,
students and unscheduled
meetings

TIME SCHEDULE

2020



TIME SCHEDULE

2020

JAN

FEB

MAR

Involvement of staff

Involvement of staff that moves to DR

Final design

Procurement and
technical installation

**Announcement and
departments meetings**

January 17

**Workshop for
reference groups**

February 3

**Material from PLH to
reference groups**

January 27

**Deep dive for
reference groups**

February 10 & 11

**Approval of final design,
layout and budget**

February 25

MOVING TO DR – ADMINISTRATIVE DEPARTMENTS

- Research and Learning Support
- IT
- Finance
- Legal
- Executive Management



MOVING TO DR – DIGITAL DESIGN

- Play, Culture & AI Cluster
- Digitalisation, welfare and social design
- Head of Department



MOVING TO DR – BUSINESS IT

- Part of TIME group
- Center for Digital Welfare (part of TiP group)
- Head of Department



MOVING TO DR – COMPUTER SCIENCE

- Machine Learning
- Networks/NERDS
- SQUARE
- Software Engineering
- Robots
- Members associated with selected research projects
- Head of Department





Thank you

IT UNIVERSITY OF COPENHAGEN